



**BREAST
CANCER
NOW** The research
& care charity



£2 OPTIONAL DONATION

We suggest that players make a donation of £2 to play, but no donation is necessary to take part.

ROUND 1

All things Afternoon Tea



What time is a traditional Afternoon Tea served?

A. 12pm B. 2pm C. 4pm



What country is the biggest tea drinker?

A. India B. Turkey C. UK



Should you put tea or milk into your teacup first?

A. Milk B. Tea



When is National Cream Tea Day 2021?

A. 25 May B. 25 June C. 25 July



Can you guess what country produces the largest quantity of coffee?

A. Brazil B. Colombia C. Vietnam

ROUND 2

Royaltea



Can you name the member of the Royal family who is a patron of Breast Cancer Now?

A. Charles, Prince of Wales
B. Kate, Duchess of Cambridge
C. Harry, Duke of Sussex



What brand of tea is served at Buckingham Palace and holds a Royal Warrant of Appointment?

A. Tetley
B. Yorkshire Tea
C. Twinings



Can you guess what Monarch first awarded the above tea brand their Royal Warrant of Appointment?

A. Queen Elizabeth II
B. Queen Victoria
C. George VI



ROUND 3

Fun facts

9

Fun fact 1: Breast Cancer Now's Afternoon Tea campaign has been running for over 20 years

A. True B. False

10

Fun fact 2: Icing used to be spread on cakes with a feather

A. True B. False

11

Fun fact 3: Afternoon Tea and High Tea are the same

A. True B. False

12

Fun fact 4: There are more than 50,000 Starbucks stores worldwide

A. True B. False

13

Fun fact 5: The Cornish way to eat a scone is jam first, cream second

A. True B. False

ROUND 4

How well do you know your host?

14

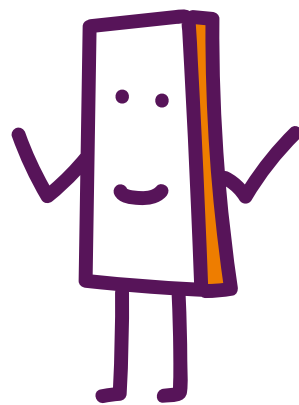
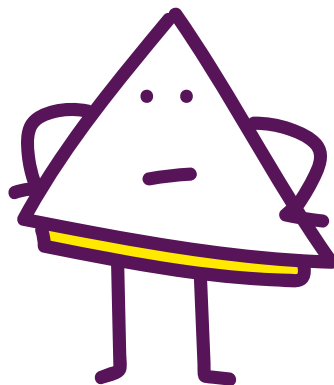
How does your host take their scone?

A. Jam first, then cream
B. Cream first, then jam

15

Does your host think sandwiches at an Afternoon Tea should be cut into:

A. Triangles B. Fingers





ROUND 5

On the screen

16

What year was the first season of the Great British Bake Off aired?

- A. 2008 B. 2010 C. 2012

17

Do you know the name of the warm and motherly character who plays a teapot in Beauty and the Beast?

- A. Mrs Potts B. Madame Garderobe
C. Chip

18

Which English actor and comedian starred in PG Tips' TV adverts alongside Monkey the puppet?

- A. Johnny Vegas B. Peter Kay
C. John Cleese

19

In Alice's Adventures in Wonderland, Alice attends The Mad Hatter's Tea Party. From the list below, pick the character that wasn't at the party:

- A. Dormouse B. March Hare
C. Mock Turtle

20

In the 1959 film, Sleeping Beauty is made a 15-layer birthday cake that is held up by what?

- A. Wand B. Knife C. Broom

ROUND 6

Guess the film from the emojis

21



22



23



24



25



ANSWER SHEET



**BREAST
CANCER
NOW** The research
& care charity

ROUND 1.

1.
2.
3.
4.
5.

ROUND 4.

14.
15.

ROUND 2.

6.
7.
8.

ROUND 5.

16.
17.
18.
19.
20.

ROUND 3.

9.
10.
11.
12.
13.

ROUND 6.

21.
22.
23.
24.
25.

Name

Score

/ 25



For more fun activities please visit breastcancernow.org/afternoonteadownload

YOUR ANSWER SHEET



**BREAST
CANCER
NOW** The research
& care charity

ROUND 1.

1. 4pm
2. TURKEY
3. MILK
4. 25TH June
5. BRAZIL

ROUND 2.

6. CHARLES, PRINCE OF WALES
7. TWININGS
8. QUEEN VICTORIA

ROUND 3.

9. TRUE
10. TRUE
11. FALSE
12. FALSE
13. TRUE

ROUND 4.

14. HOST ANSWERS
15. HOST ANSWERS

ROUND 5.

16. B. 2010
17. A. MRS POTTS
18. A. JOHNNY VEGAS
19. C. MOCK TURTLE
20. C. BROOM

ROUND 6.

21. CAKE
22. CHARLIE AND THE CHOCOLATE FACTORY
23. THE BREAKFAST CLUB
24. GOLDILOCKS AND THE THREE BEARS
25. EAT PRAY LOVE



For more fun activities please visit breastcancernow.org/afternoonteadownload